

Technical sheet No 65GM/KAR

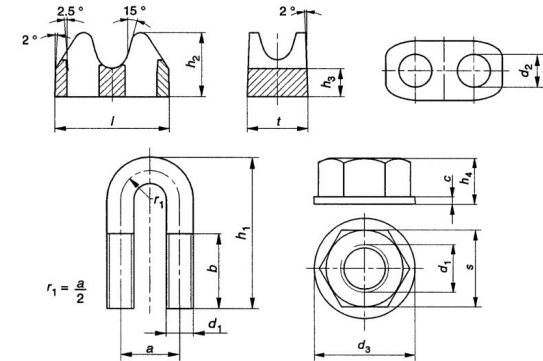
1. Supplier name: **GÓRALMET Sp. z o.o.**

Supplier address: **ul. Krakowska 68, 32-860 Czchów, tel/fax 014 6635260**

2. Product name: **GM-ZL U-bolt wire rope grip EN 13411-5**

3. GM-ZL wire rope grip, is a assembly consisting of a U-bolt, bridge and the nuts that allow for two parts of rope to be pressed together when the nuts are tightened. Suitable uses include suspending static loads and single use lifting operations, with the use of round, strand steel wire ropes up to 1960 N/mm². For use within technical parameters given in point 5. GM-ZL wire rope grips can not be used as the primary securing devices on mine hoists, crane hoists or eye terminations for slings for general lifting service.

4. Storage, installation and usage - according to instruction manual for GM-ZL U-bolt wire rope grips



5. Technical parameters:

No	Size	Nominal dimensions [mm]													Weight [kg/pc]	Tightening torque [Nm]	No of grips [min pcs / loop]	Distance betw. grips min-max. [mm]	For wire ropes up to [N/mm ²]	
		a	b	d ₁	h ₁	d ₂	h ₂	h ₃	l	t	c	d ₃	h ₄	s					Fiber core	Steel core
1	2	3	4	5	6	7	8	9	10	11	12	13	14	15	16	17	18	19	20	21
1	5	12	13	M5	25,5	6	13	5,5	25	13	1,4	11	5	8	0,021	2,0	3	19,5-39	1960	1960
2	6.5	14,5	17	M6	32	8	14	6	30	16	1,6	13	5,5	10	0,035	3,5	3	24-48	1960	1960
3	8	18	20	M8	42	10	18	9	39	20	1,7	17	8	13	0,086	6,0	4	30-60	1960	1960
4	10	20	25	M8	46	10	21	9	39	20	1,7	17	8	13	0,091	9,0	4	30-60	1960	1960
5	12	25	30	M10	56	12	25	11	49,5	23,5	1,9	20	10	16	0,172	20	4	36-72	1960	1960
6	14	28	32	M12	67	16	30	13,5	57	28	2,5	24	12	18	0,270	33	4	42-84	1960	1960
7	16	34	36	M14	79	17	36	16,5	64	32	3,4	28	13	21	0,432	49	4	48-96	1960	1960
8	19	38	40	M14	86	17	41	17,5	67	32	3,4	28	13	21	0,486	68	4	48-96	1960	1960
9	22	41,5	44	M16	97	19	44,5	20	73,5	34	3,4	29,5	15,5	24	0,654	107	5	51-102	1960	1960
10	26	47,5	52	M20	120	24	51,5	23	83,5	38	4,5	37	23	30	1,090	147	5	57-114	1960	1960
11	30	56	56	M20	135	24	59	27	93,5	41	5	37	23	30	1,380	212	6	61,5-123	1960	1960
12	34	60	68	M22	150	25,5	66,5	30	107	46,5	7	45	29	34	2,114	296	6	67,5-135	1960	1960
13	40	68	70	M24	169	27	77	32,5	120	50	7	45	29	34	2,748	363	6	73,5-147	1960	1960

Material: Bolt - grade 6.8; Nuts - grade 6 (M5-M20 serrated face, M22-24 flat face); Bridge – malleable cast iron

Coatings: zinc electroplated and yellow chromated

6. Additional informations:

- Manufacturer and product identification code: GM-ZL
- Traceability code: order No (refer to the order and production date)

- Markings (on the bottom of the bridge): size; manufacturer's symbol – GM or GMG (size ≥ 8); **CE** (size ≥ 10)

- Additional informations – label: **CE**; product name; size; quantity; order No; manufacturer's data and website address.