

Technical sheet No 9GM/KAR

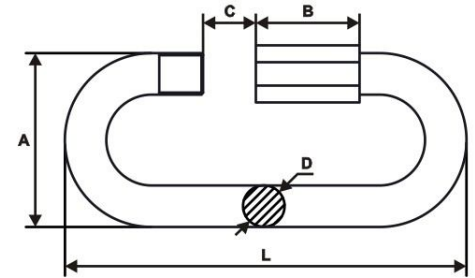
1. Supplier name: **GÓRALMET Sp. z o.o.**

Supplier address: **ul. Krakowska 68, 32-860 Czchów, tel/fax 014 6635260**

2. Product name: **Quick link**

3. Description and use: Steel links with nut for use in agriculture, as chain accessory, and the other general applications. For use within technical parameters given in point 5.

4. Quick links cannot be used in the applications that has safety requirements regulated by law or standards, for example for lifting. Do not overload over WLL (kG) given in column 13.



5. Technical parameters:

No	Size [mm]	Nominal dimensions [mm]									Weight [kg/pc]	WLL Working load [kG]	BF Breaking force [min. Kg]	Material	Coatings
		A [mm]	B [mm]	C min [mm]	D [mm]	L [mm]	---	---	---	---					
1	2	3	4	5	6	7	8	9	10	11	12	13	14	15	16
1	3.5	18	12,5	4	3,5	36	---	---	---	---	0,008	60	240	Body: C15 Nut: C10	Electro-galvanized
2	4	20	14,5	5	4	43	---	---	---	---	0,012	80	320		
3	5	23	16,5	6	4,8	51	---	---	---	---	0,020	125	500		
4	6	27	20	7	5,8	58	---	---	---	---	0,031	160	640		
5	7	31	22	8	6,9	67	---	---	---	---	0,051	220	880		
6	8	34	24	9	7,6	72	---	---	---	---	0,067	320	1280		
7	10	41	29	11	9,8	90	---	---	---	---	0,128	500	2000		
8	12	48	34	13	11,7	107	---	---	---	---	0,210	640	2560		
9	14	56	40	15	14	133	---	---	---	---	0,375	880	3520		
10	16	63	46	17	15,9	146	---	---	---	---	0,550	1280	5120		

6. Additional informations:

- Safety factor - 4
- $BF = 4,0 \times WLL$
- Markings: manufacturer's symbol – GM or GMG; size code
- Additional informations – label: product name; size; quantity; order No; manufacturer's data and website address.